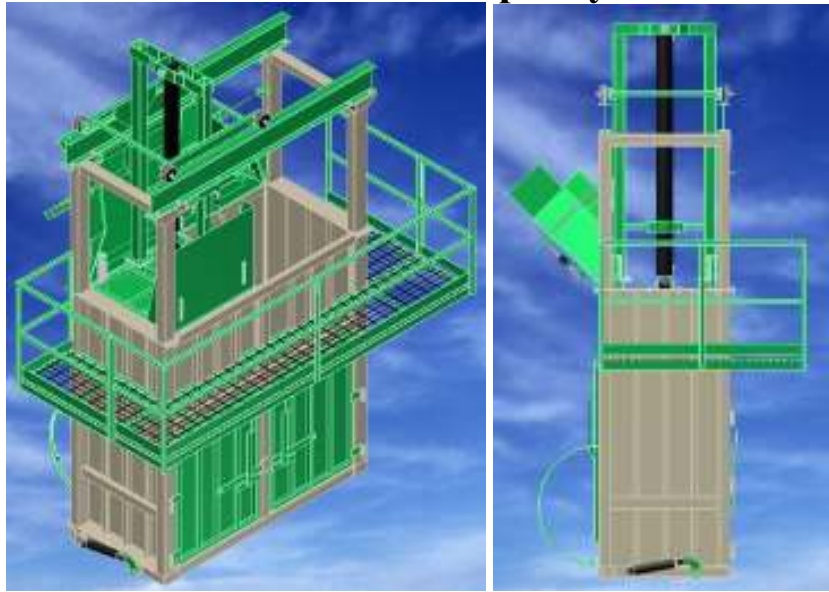


## BaleMaster 9672 Hi-Capacity Tobacco Baler



The BaleMaster 9672 provides the most efficient continuous baling process available. It's unique, proven dual chamber design with a single press head provides trouble free baling for years. Its high quality design provides and produces a very neat and square bale. Buy direct from the manufacturer and assure yourself of receiving prompt factory service if needed.

### Specifications:

- \* Proven dual chamber design with a single press head
- \* Heavy durable construction to provide years of service
- \* Self contained hydraulic power supply with (2) 7.5 hp motors coupled to (2) 22 g.p.m. Hi-Lo 2 stage pumps
- \* Digital scale package standard
- \* Factory installation turn key

\*\*\* We can design, fabricate and install your entire conveyor needs to fit your application and allow your operation to be as labor free and productive as possible.

